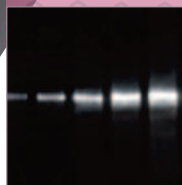
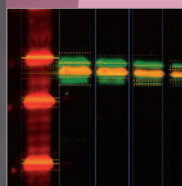


# g e l P R O



an **entry level**  
**system** for  
fluorescence  
and visible  
applications

- UPGRADEABLE TO CHEMILUMINESCENCE WITH HIGH SENSITIVITY CAMERA
- SPACIOUS DARKROOM - VIEW UP TO 25x30CM GELS
- 5M PIXEL CAMERA
- MOTOR DRIVEN ZOOM LENS AND FILTER WHEEL
- FEEDBACK LENS OPTION
- WHITE, UV AND BLUE LIGHTING OPTIONS
- GENEPIX AUTOMATIC CONTROL SOFTWARE
- UNLIMITED COPIES OF GENEQUANT ANALYSIS SOFTWARE



- Upgradeable to chemiluminescence
- Spacious darkroom - view up to 25x30cm gels
- 5m pixel camera
- Motor driven zoom lens and filter wheel
- Feedback lens option
- White, UV and blue lighting options
- genePIX automatic control software
- Unlimited copies of geneQUANT analysis software

gelPRO has a high resolution 5m pixel camera which is capable of giving outstanding images with incredible spatial resolution. The gelPRO gel documentation system has a stylish modular design and includes a motor driven zoom lens as standard, as well as a motor driven filter wheel. Internal lighting comes from an optional UV transilluminator or a blue light LED model to further extend the applications possible with the gelPRO.

#### APPLICATIONS

- Affordable system for routine fluorescent and visible gel imaging.
- High resolution 5MP camera for good spatial resolution.
- Effective resolution up to 15.1MP.
- Motor driven lens with feedback
- Integral white LED lighting for sample positioning, visible light applications and colorimetric markers.
- Motor driven 7-position filter wheel with UV filter to extend applications.
- Automatic or manual control using genePIX.
- Pre-defined 1-click protocols for rapid imaging.
- Unlimited user saveable protocols.
- Use with UV transilluminator for DNA imaging.
- Use converter screen for visible light applications such as protein gels.
- Use with blue LED UltraBright transilluminator for safe-dye applications.
- Includes unlimited copies of geneQUANT analysis software.
- IQ/OQ qualification protocols as available.

#### APPLICATIONS INDEX

DNA GELS	✓
PROTEIN GELS	✓
COLONY COUNTING	✓
COLORIMETRIC BLOTS	✓
FILMS	✓

# gelPRO



#### TECHNICAL SPECIFICATION

SYSTEM	GELPRO
IMAGE RESOLUTION (MEGAPIXELS)	5
EFFECTIVE RESOLUTION (MEGAPIXELS)	15.3
A/D	12/16 BIT
GREYSCALES	65 536
QUANTUM EFFICIENCY @ 425NM	52%
COOLING - REGULATED	N/A
LENS (MOTOR DRIVEN)	F1.2 WITH FEEDBACK
FILTER WHEEL (7 POSITION)	•
UV FILTER*	•
USE WITH EXTERNAL PC	•
DARKROOM - STANDARD	•
<b>LIGHTING</b>	
EPI LED WHITE LIGHTS	•
EPI UV 302NM**	•
VISIBLE LIGHT CONVERTER (33 x 31 cm)	•
WHITE LIGHT PAD FOR VISIBLE STAINS (20 x 14 or 20 x 30 cm)	•
ULTRABRIGHT LED BLUE LIGHT TRANSILLUMINATOR (20 x 16 cm)	•
UV TRANSILLUMINATOR 302NM (20 x 20 cm)***	•
<b>DIMENSIONS</b>	
MAXIMUM IMAGE AREA (CM)	32.5 x 24.1
MINIMUM IMAGE AREA (CM)	5.6 x 4.2
W x H x D (CM)	57 x 84 x 45
WEIGHT (KG)	37
SUPPLY VOLTAGE (V AC)	115 / 240

\* OTHER EMISSION FILTERS ARE AVAILABLE

\*\* OTHER WAVELENGTHS ARE AVAILABLE

\*\*\* OTHER SIZES AND WAVELENGTHS ARE AVAILABLE INCLUDING DUAL WAVELENGTH

#### ORDERING INFORMATION

gelPRO Gel Documentation System for fluorescence and visible applications

#### CLEAVER SCIENTIFIC LTD

Unit 41, Somers Road Industrial Estate,  
 Rugby, CV22 7DH  
 United Kingdom

T\_ +44 (0)1788 565300  
 E\_ INFO@CLEAVERSCIENTIFIC.COM  
 W\_ WWW.CLEAVERSCIENTIFIC.COM